

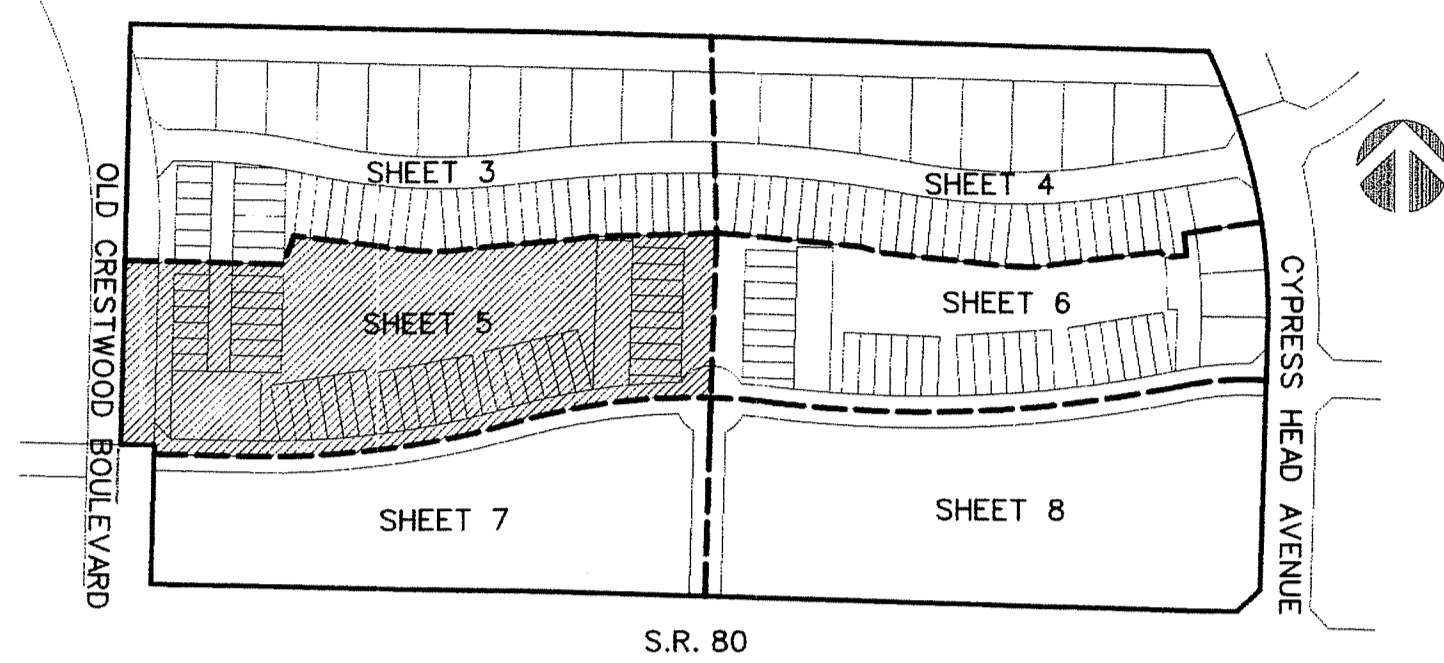
PERIMETER

SURVEYING & MAPPING
 Certificate of Authorization No. LB7264
 Prepared by Jeff S. Hodapp, P.S.M.
 947 Clint Moore Road
 Boca Raton, Florida 33487
 Tel: (561) 241-9988
 Fax: (561) 241-5182

PARK CENTRAL AT CYPRESS KEY

A PORTION OF SECTION 34, TOWNSHIP 43 SOUTH, RANGE 41 EAST,
 VILLAGE OF ROYAL PALM BEACH, PALM BEACH COUNTY, FLORIDA
 FEBRUARY, 2015

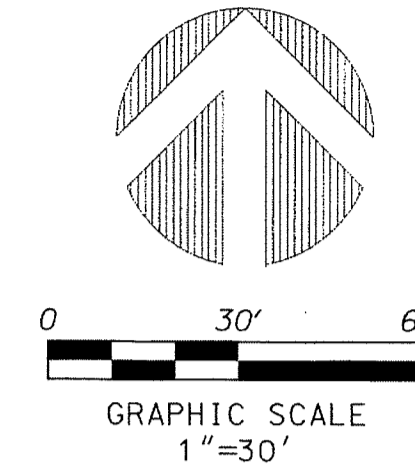
201



LEGEND:

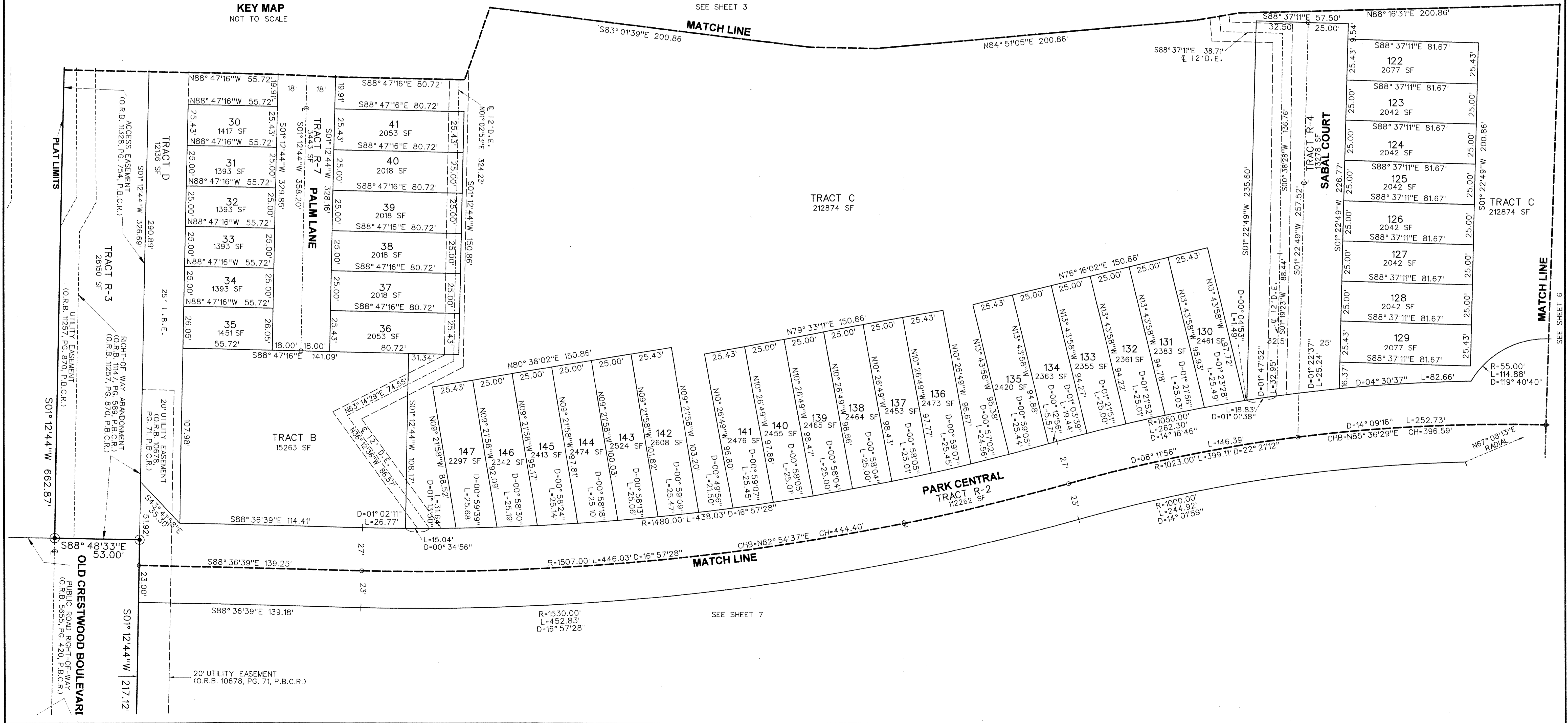
- SET P.R.M. (UNLESS OTHERWISE NOTED) 3" x 4" CONC. MON. WITH ALUMINUM DISK STAMPED P.R.M. • LB7264
 - PERMANENT CONTROL POINT
 - ⊕ CENTERLINE
- ABBREVIATIONS:**
- ALUM ALUMINUM
 - CHB CHORD BEARING
 - CONC. CONCRETE
 - COR. CORNER
 - Δ DELTA (CENTRAL ANGLE)
 - D.E. DRAINAGE EASEMENT
 - FND. FOUND
 - L ARCLength
 - L.A.E. LIMITED ACCESS EASEMENT
 - L.B.E. LANDSCAPE BUFFER EASEMENT
 - L.B. LICENSED BUSINESS
 - L.E. LANDSCAPE EASEMENT
 - L.M.E. LAKE MAINTENANCE EASEMENT
 - L.M.A.E. LAKE MAINTENANCE ACCESS EASEMENT

- L.S. LICENSED SURVEYOR
- L.S.E. LIFT STATION EASEMENT
- L.W.D.D. LAKE WORTH DRAINAGE DISTRICT
- MON. MONUMENT
- O.R.B. OFFICIAL RECORDS BOOK
- N.R. NON-RADIAL
- P.B. PLAT BOOK
- P.B.C. PALM BEACH COUNTY
- P.B.C.R. PALM BEACH COUNTY RECORDS
- P.G. PAGE
- P.C.P. PERMANENT CONTROL POINT
- P.O.B. POINT OF BEGINNING
- P.O.C. POINT OF COMMENCEMENT
- P.R.M. PERMANENT REFERENCE MONUMENT
- P.S.M. PROFESSIONAL SURVEYOR & MAPPER
- P.U.D. PLANNED UNIT DEVELOPMENT
- R. RADIUS
- RAD. RADIAL
- R.P.B. ROAD PLAT BOOK
- R/W RIGHT-OF-WAY
- SEC. SECTION
- S.F. SQUARE FEET
- U.E. UTILITY EASEMENT



SHEET 5 OF 8

KEY MAP NOT TO SCALE



KEY MAP NOT TO SCALE

SEE SHEET 3

MATCH LINE

SEE SHEET 6

MATCH LINE

SEE SHEET 7